

Needs Profile Analysis



Consortiwm Comisiynu
Cymru ar gyfer Plant
Children's Commissioning
Consortium Cymru
Cydweithio Er Gwell • All Together Better

Introduction

This Needs Profile Analysis focuses on the needs of children looked after whose placements are commissioned by Welsh Local Authorities from the independent sector.

There is a sufficiency gap and mismatch between registered service provision and its ability to meet children's needs. The gap has grown, particularly for those children who require integrated or complex care packages to allow them to thrive.

Public sector investment is growing to rebalance the level of commissioned services, but this investment alone will not deliver sufficiency.

Local Authorities want to work with independent providers to deliver complementary services as a cohesive whole, to meet the needs of vulnerable children and improve their outcomes.



Who are our Children Looked After in Wales?

KEY STATISTICS & TRENDS FOR SERVICE PROVIDERS | MARCH 2024

31% of children in Wales live in relative income poverty (**highest in UK**), contributing to increase in families in acute stress.

7,200

Total children looked after by Welsh local authorities

28.4%

Higher than a decade ago

1.1%

Of population under 18 living in Wales

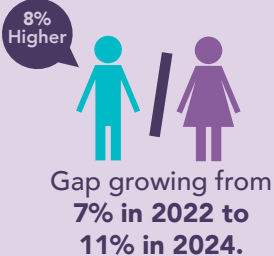
2nd

Highest rate per 10,000 among UK nations.

21% of working age adults in Wales live in relative income poverty

Demographic and Age Distribution

Gender Split



Ethnicity

Predominantly White Welsh/English speaking

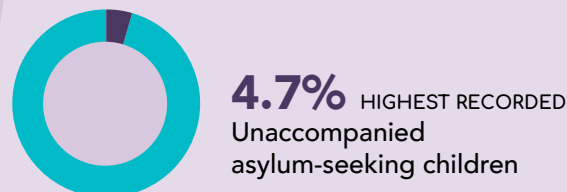
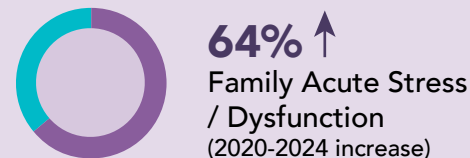
Black/Mixed ethnic groups disproportionately represented vs general population.

Age Groups

10+ Years 59% 4,280 Children

Under 9 Years 41% 2910 Children

Reasons for Care



Placement Types and Outcomes

68%

Foster Care (down from 79% in 2011)

34%

Kinship Care

51%

Children leaving care return home to family

Residential Homes (including secure)

12%

Key Trend : Children Entering Care Older

10+ age group increased 13% over 5 years, while under-9s decreased 14%.
16-18 year old males increased by 56%
This reflects overall trend of children entering care older than in the 2010s.



Consortium Comisiynu
Cymru ar gyfer Plant
Childrens' Commissioning
Consortium Cymru
Cydwethio Er Gwell • All Together Better

Placement Sufficiency Challenges

Decreasing sufficiency in mainstream foster care.
Shortage of residential care offering integrated models of care for children at the highest risk.
Secure settings giving notice or declining referrals due to inability to meet children's needs.

Commonalities of Experience, Need and Behaviour

These common needs are cross cutting a range of more distinct profiles.

Hover over each circle to find out more



ACE's, Trauma & Wales' Trauma Informed Approach

Understanding the impact in England and Wales

1/3

of children in
England and Wales
experience trauma
by age 18

1/4

of those affected
develop PTSD
by age 18

**Higher Risk
Groups**

[Read more](#)

**Children in
Care in Wales**

[Read more](#)

**Critical
Finding**

[Read more](#)

Needs Profile



Education and Training

73 children referred had been excluded from school (2024).

57% of referrals for Secure Welfare are not registered with a school.

Hover for more information

tell me more

Disability, Additional Needs and Impairment

Children disabled by barriers that commonly exist in society.
7.4% of children looked after had a physical or mental impairment (March 2024).

Hover over each tab to find out more

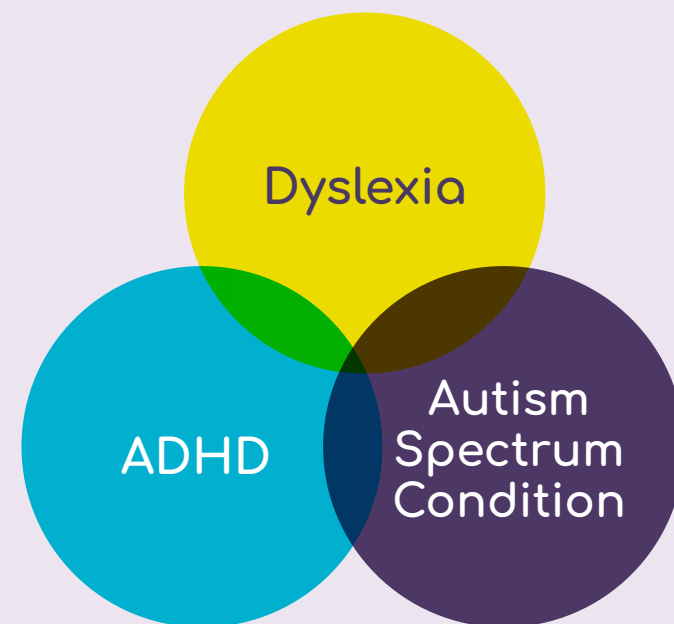
Physical Health Needs

Additional Learning Needs

Neurodiversity

Areas of Neuro diversity that were most prominent in referrals included Dyslexia, ADHD and Autism. These conditions often co occur and symptoms can overlap

Hover over each circle to find out more



Sufficiency in this area of service is at high risk from impact by the HSCW Act 2025

Hover over each icon to find out more information



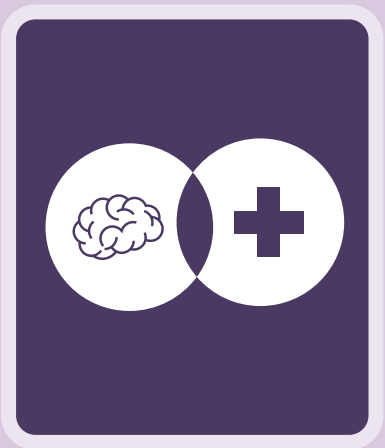
Sexualised
Behaviours and
Vulnerabilities



Self-Harm

HTTP://WWW.





Hover over each icon to find out more information

Specific Care Setting Needs for Children

Hover over each title to find out more

Parent and Child

Siblings

Solo Care

Step Down:
Residential To Foster

Specific Care Setting Needs for Children

Hover over each circle to find out more



Model of
Care



Complexity
of Care: Not
Child

More information on models of care can be found via these reports:

Cordis Bright reports:

Models of childrens residential care

<https://www.cordisbright.co.uk/news/models-of-childrens-residential-care>

Models of foster care

<https://www.cordisbright.co.uk/news/models-of-foster-care>

Social Care Wales evidence summary:

Supporting positive outcomes in childrens residential care

<https://insightcollective.socialcare.wales/evidence-summaries/supporting-positive-outcomes-in-childrens-residential-care-an-evidence-summary>

Concluding Reflections

The analysis highlights the current presenting needs, identifies trends and shares where the forecast is for either decreased, stable, or increased likelihood of the needs profile presenting over the next 5 years.

There are substantial gaps, however, when overlaying the range of targeted services to meet the full continuum of needs of children looked after. This is especially evident where needs are multi-faceted and high risk.

We want to work with providers and multi-agency partners to close those gaps, with a fuller range of services that deliver evidence-based care shown to meet needs and allow children to thrive into adulthood.

The legislative landscape is changing under the Health and Social Care (Wales) Act 2025. We want to work with providers committed to delivering ongoing registered care and support services, to minimise disruption to children looked after during implementation, alongside a targeted re-alignment of service provision to meet needs profiles.



Consortium Comisiynu
Cymru ar gyfer Plant
Childrens' Commissioning
Consortium Cymru
Cydwethio Er Gwell • All Together Better

If you would like to contact 4Cs for a discussion about targeted service development, needs profiles, or our wider commissioning activity, please get in touch at:

 **4Cs@rctcbc.gov.uk**

 **01443 570098**

More information can be found via the full report:

Needs Analysis for Commissioned Care and Placement Services 2025 - Helping develop the homes and care we need to improve outcomes

A Welsh language version both documents are available.